

# Metacentre™ Cyber Console – T83

Identification: Metacentre™ Cyber Console  
 Part number: Refer to Product guide / price list for specific part number or contact dealer  
 Product Family: Metacentre™  
 Function: Software GUI (graphical user interface) console  
 Console: Metacentre™ system HTML / Java screens accessible using a personal computer connected to Metacentre TX™ via IP and either Internet Explorer 7+ or Mozilla Firefox 2+  
 Software: Pre-programmed application software  
 Supported protocol: IP, **AirBUS** & Modbus RTU

Product overview:

Metacentre™ Cyber Console is a dedicated software solution for use with Metacentre™ system equipment. Hosted on the Metacentre™ TX host interface & communication gateway Metacentre™ Cyber Console is accessed using a personal computer connected to Metacentre™ TX via IP and either Internet Explorer 7+ or Mozilla Firefox 2+(Refer to T42.1 for more information about Metacentre™ TX).

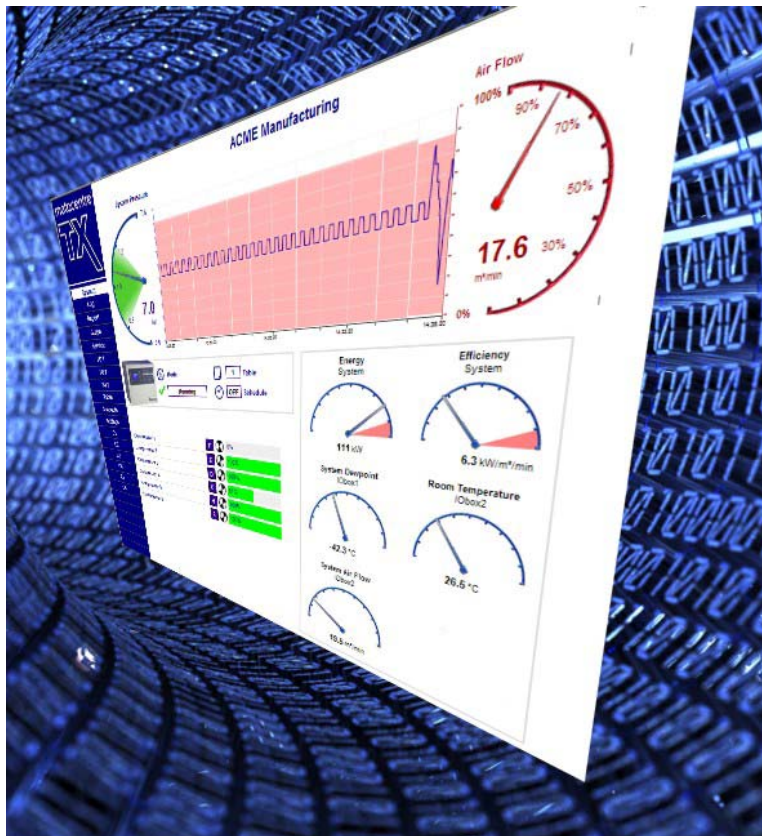
Metacentre™ Cyber Console is independent of remote servers or other IT infrastructure hardware; allowing users to create their own dedicated data tunnel, freely & easily accessing information from wherever they may be in the world. And with Metacentre™ at the centre of the compressed air system, Metacentre™ Cyber Console provides unrivalled access to system information through its intuitive HTML & Java screens. Metacentre™ Cyber Console supports the Latin / Roman alphabet, Cyrillic alphabet and Han (Chinese) character sets (please refer to your dealer for a complete list of available language / character sets).

From the Metacentre™ Cyber Console, administrators are able to set up and modify user accounts from simple 'view' rights through to full Cyber console administrator rights.

Once configured, users are able to log onto the Metacentre™ Cyber Console via the World Wide Web where they will find a series of HTML & Java screens with navigation via the consoles left hand navigation area.

An overview of the Metacentre™ Cyber Console environment is provided over. However, to experience the full capability of Metacentre™ Cyber Console we recommend you request a demonstration from your dealer.

Metacentre™ Cyber Console exploits the communication capabilities of the Metacentre™ TX web host interface. In addition to accessing data through a series of dedicated HTML & Java screens, Metacentre™ Cyber console allow users set up condition based email & SMS (short message service via GSM (global system for mobile communication)) event triggers.



metacentre™

# metacentre™



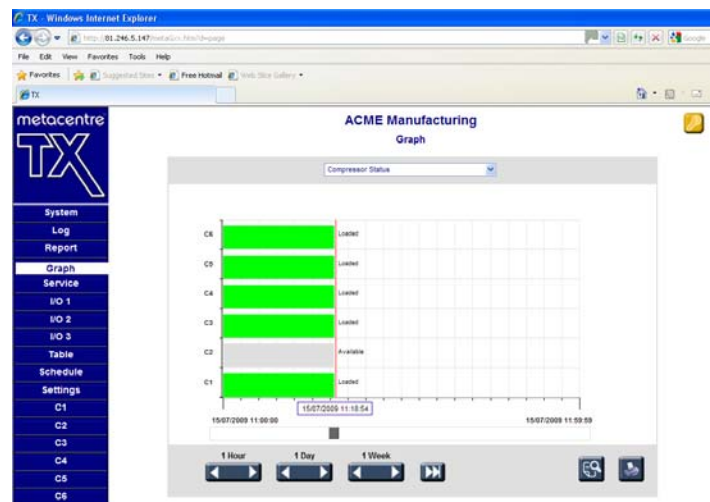
Metacentre™ Cyber Console has a navigation area to the left (blue).

The 'System' tab (left) is the Cyber Console's 'home page'. Providing an overview of system pressure, system flow (calculated or actual, dependant on equipment installed), compressor equipment status; available, running, loaded, % loaded (variable output compressors), alarm and trip state conditions, up to 6 user configurable analogue gauge indicators (5 shown) and the operating status of the Metacentre™ system controller itself, the home page allows you to navigate towards reporting tools, graphing tools, service condition event triggers, distributed I/O view screens and compressor specific data screens. The

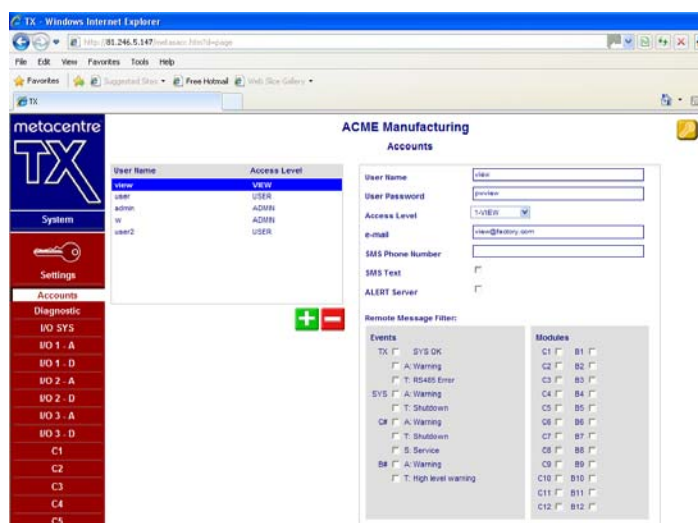
'Settings' tab is used for users with permissible access rights to set system configurable parameters.

On the home page, an intuitive graphing tool is used to display pressure & flow (actual or calculated) 'live' and continuously display the previous hour's logged data. Metacentre™ Cyber Console's graphing capability can be

further exploited by navigating to the 'Graph' tab. From here, users can select from a drop down menu of parameters that can be graphed including system pressure, flow, energy, efficiency, compressor status as well as every item of I/O; analogue or digital connected to the Metacentre™ system installation. 'Hour', 'Day' & 'Week' tabs are provided to allow chronological navigation across an entire month worth of logged data. 'Print' & 'Report' tabs provide a means of either printing the graph being viewed, or navigating directly to the report tool where a key performance report is produced using the same data resolution.



Analogue and digital I/O can be configured for convenient viewing on 1 of 3 dedicated 'I/O' tabs. Each screen can display up to 16 digital inputs or outputs and up to 12 analogue inputs. The digital inputs display the contact state in a user defined series of colours whilst analogue inputs are displayed using gauges. The location of each item of data is independent of the 'I/O' tab allowing the custom configuration of I/O screens specific to individual & site requirements.



Metacentre™ Cyber Console captures a series of event triggers such as compressor alarms or trip condition events or analogue value alarm or trip levels. Via the 'Settings' tab, users with permissible rights are able to configure the distribution of advisory emails and / or SMS messages based on these event triggers. Metacentre™ Cyber Console operates using a conventional simple mail transfer protocol (SMTP) for distributing email. Additionally, using Metacentre™ TX's modem and an accessible SMS message routing service, event triggers can be delivered directly to configured GSM numbers.

To experience the full capability of Metacentre™ Cyber Console we recommend you request a demonstration from your dealer.